



ELESA Original design

MBR.

Diamond cut knurled control knobs

with collar or flange, technopolymer



Main specifications

Knob

High-resilience polypropylene based (PP) technopolymer, black colour, matte finish.

Collar or flange

Glass-fibre reinforced polyamide based (PA) technopolymer, black colour, matte finish.

Coloured centre cap

Technopolymer, matte finish.

To order, add the index of the desired colour (C9, ..., C6) to the code and the description.

On request and for sufficient quantities, it can be supplied in other colours or with customised graphic symbols, marks or writings.

Standard executions

Brass boss, plain blind hole.

Assembly by means of a black-oxide steel transversal grub screw UNI 5929 (grub screw with hexagon socket and cup end). Included in the supply.

- **MBR+C**: plain collar.
- **MBR+CK**: collar with triangular index.
- **MBR+CGS**: collar with standard graduation, 40 marks, the numbering from 0 to 9 increases as the knob is turned clockwise.
- **MBR+FK**: flange with triangular index.
- **MBR+FGS**: flange with standard graduation, 40 marks, the numbering from 0 to 9 increases as the knob is turned clockwise.
- **MBR+FKP**: flange with triangular index. Rear compartment for potentiometer housing.
- **MBR+FGSP**: flange with standard graduation, 40 marks, the numbering from 0 to 9 increases as the knob is turned clockwise. Rear compartment for potentiometer housing.

Precision graduations, laser engraved numbering and triangular index.

General information

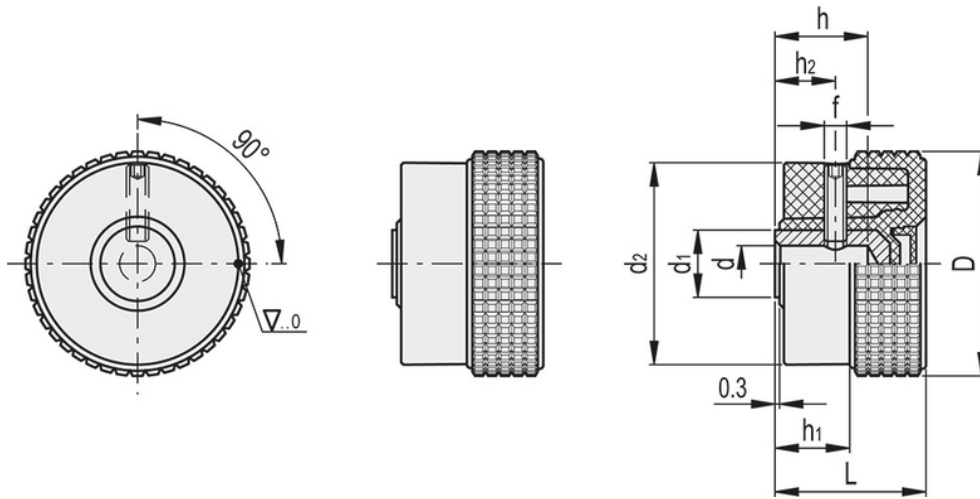
Ergonomy and design








The fine pitch knurling on the outside rim of the knob, allows a safe and comfortable grip, offering the operator the possibility of operating under the most different working conditions in a sensitive and ergonomic way and simplifying the adjustment of the knob during rapid rotation (or screwing) without any unpleasant angular work for the hand and wrist.

Other executions

Special executions on request

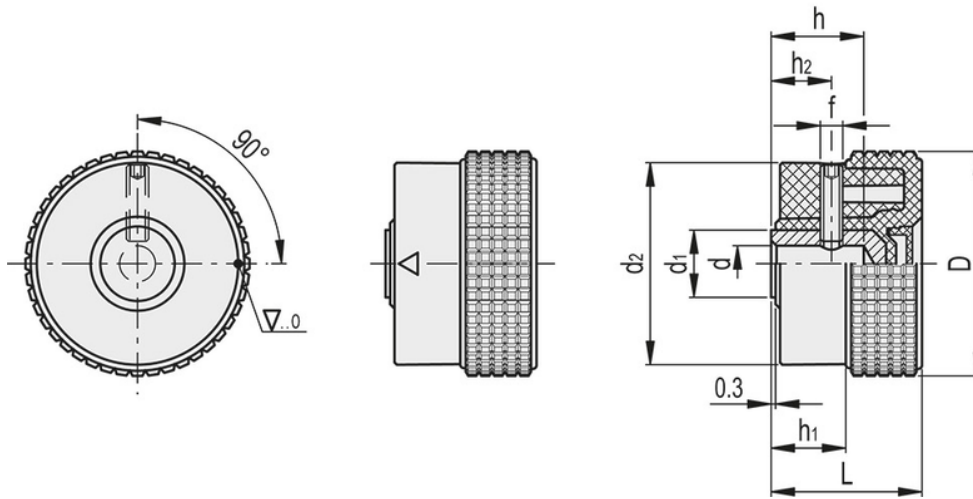
Different graduations (see [Graduations](#)).










	Black (RAL 9005)	C9
	Blue (RAL 5024)	C5
	Green (RAL 6017)	C17
	Grey (RAL 7035)	C3
	Orange (RAL 2004)	C2
	Red (RAL 3000)	C6
	Yellow (RAL 1021)	C4

MBR+C

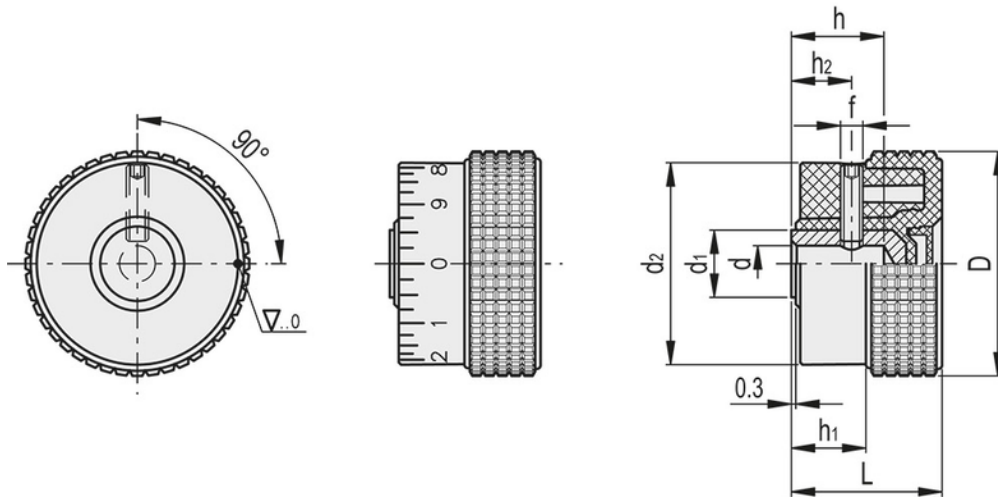
Code	Description	D	d _{H9}	L	d ₁	d ₂	h	h ₁	h ₂	f	Weight
34811-C17	MBR.30 B-5+C-C17	30	5	24	11	26	12	10.5	8.5	M4	32
34811-C2	MBR.30 B-5+C-C2	30	5	24	11	26	12	10.5	8.5	M4	32
34811-C3	MBR.30 B-5+C-C3	30	5	24	11	26	12	10.5	8.5	M4	32
34811-C4	MBR.30 B-5+C-C4	30	5	24	11	26	12	10.5	8.5	M4	32
34811-C5	MBR.30 B-5+C-C5	30	5	24	11	26	12	10.5	8.5	M4	32
34811-C6	MBR.30 B-5+C-C6	30	5	24	11	26	12	10.5	8.5	M4	32
34811-C9	MBR.30 B-5+C-C9	30	5	24	11	26	12	10.5	8.5	M4	32
34821-C17	MBR.30 B-6+C-C17	30	6	24	12	26	14	10.5	8.5	M4	30
34821-C2	MBR.30 B-6+C-C2	30	6	24	12	26	14	10.5	8.5	M4	30
34821-C3	MBR.30 B-6+C-C3	30	6	24	12	26	14	10.5	8.5	M4	30
34821-C4	MBR.30 B-6+C-C4	30	6	24	12	26	14	10.5	8.5	M4	30
34821-C5	MBR.30 B-6+C-C5	30	6	24	12	26	14	10.5	8.5	M4	30
34821-C6	MBR.30 B-6+C-C6	30	6	24	12	26	14	10.5	8.5	M4	30
34821-C9	MBR.30 B-6+C-C9	30	6	24	12	26	14	10.5	8.5	M4	30
34831-C17	MBR.40 B-6+C-C17	40	6	26	12	34.5	14	12	9	M4	35
34831-C2	MBR.40 B-6+C-C2	40	6	26	12	34.5	14	12	9	M4	35
34831-C3	MBR.40 B-6+C-C3	40	6	26	12	34.5	14	12	9	M4	35
34831-C4	MBR.40 B-6+C-C4	40	6	26	12	34.5	14	12	9	M4	35
34831-C5	MBR.40 B-6+C-C5	40	6	26	12	34.5	14	12	9	M4	35
34831-C6	MBR.40 B-6+C-C6	40	6	26	12	34.5	14	12	9	M4	35
34831-C9	MBR.40 B-6+C-C9	40	6	26	12	34.5	14	12	9	M4	35
34851-C17	MBR.50 B-8+C-C17	50	8	33	15	45	20	15	11.5	M5	60
34851-C2	MBR.50 B-8+C-C2	50	8	33	15	45	20	15	11.5	M5	60
34851-C3	MBR.50 B-8+C-C3	50	8	33	15	45	20	15	11.5	M5	60
34851-C4	MBR.50 B-8+C-C4	50	8	33	15	45	20	15	11.5	M5	60
34851-C5	MBR.50 B-8+C-C5	50	8	33	15	45	20	15	11.5	M5	60
34851-C6	MBR.50 B-8+C-C6	50	8	33	15	45	20	15	11.5	M5	60
34851-C9	MBR.50 B-8+C-C9	50	8	33	15	45	20	15	11.5	M5	60










	Black (RAL 9005)	C9
	Blue (RAL 5024)	C5
	Green (RAL 6017)	C17
	Grey (RAL 7035)	C3
	Orange (RAL 2004)	C2
	Red (RAL 3000)	C6
	Yellow (RAL 1021)	C4

MBR+CK

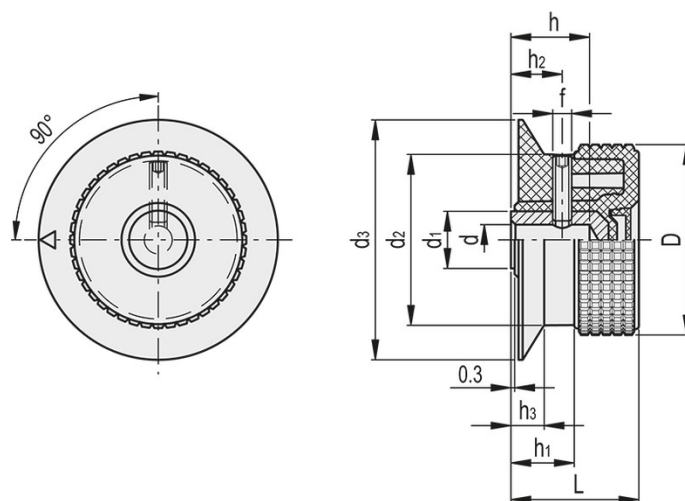
Code	Description	D	d _{H9}	L	d ₁	d ₂	h	h ₁	h ₂	f	Weight
34812-C17	MBR.30 B-5+CK-C17	30	5	24	11	26	12	10.5	8.5	M4	32
34812-C2	MBR.30 B-5+CK-C2	30	5	24	11	26	12	10.5	8.5	M4	32
34812-C3	MBR.30 B-5+CK-C3	30	5	24	11	26	12	10.5	8.5	M4	32
34812-C4	MBR.30 B-5+CK-C4	30	5	24	11	26	12	10.5	8.5	M4	32
34812-C5	MBR.30 B-5+CK-C5	30	5	24	11	26	12	10.5	8.5	M4	32
34812-C6	MBR.30 B-5+CK-C6	30	5	24	11	26	12	10.5	8.5	M4	32
34812-C9	MBR.30 B-5+CK-C9	30	5	24	11	26	12	10.5	8.5	M4	32
34822-C17	MBR.30 B-6+CK-C17	30	6	24	12	26	14	10.5	8.5	M4	30
34822-C2	MBR.30 B-6+CK-C2	30	6	24	12	26	14	10.5	8.5	M4	30
34822-C3	MBR.30 B-6+CK-C3	30	6	24	12	26	14	10.5	8.5	M4	30
34822-C4	MBR.30 B-6+CK-C4	30	6	24	12	26	14	10.5	8.5	M4	30
34822-C5	MBR.30 B-6+CK-C5	30	6	24	12	26	14	10.5	8.5	M4	30
34822-C6	MBR.30 B-6+CK-C6	30	6	24	12	26	14	10.5	8.5	M4	30
34822-C9	MBR.30 B-6+CK-C9	30	6	24	12	26	14	10.5	8.5	M4	30
34832-C17	MBR.40 B-6+CK-C17	40	6	26	12	34.5	14	12	9	M4	35
34832-C2	MBR.40 B-6+CK-C2	40	6	26	12	34.5	14	12	9	M4	35
34832-C3	MBR.40 B-6+CK-C3	40	6	26	12	34.5	14	12	9	M4	35
34832-C4	MBR.40 B-6+CK-C4	40	6	26	12	34.5	14	12	9	M4	35
34832-C5	MBR.40 B-6+CK-C5	40	6	26	12	34.5	14	12	9	M4	35
34832-C6	MBR.40 B-6+CK-C6	40	6	26	12	34.5	14	12	9	M4	35
34832-C9	MBR.40 B-6+CK-C9	40	6	26	12	34.5	14	12	9	M4	35
34852-C17	MBR.50 B-8+CK-C17	50	8	33	15	45	20	15	11.5	M5	60
34852-C2	MBR.50 B-8+CK-C2	50	8	33	15	45	20	15	11.5	M5	60
34852-C3	MBR.50 B-8+CK-C3	50	8	33	15	45	20	15	11.5	M5	60
34852-C4	MBR.50 B-8+CK-C4	50	8	33	15	45	20	15	11.5	M5	60
34852-C5	MBR.50 B-8+CK-C5	50	8	33	15	45	20	15	11.5	M5	60
34852-C6	MBR.50 B-8+CK-C6	50	8	33	15	45	20	15	11.5	M5	60
34852-C9	MBR.50 B-8+CK-C9	50	8	33	15	45	20	15	11.5	M5	60










	Black (RAL 9005)	C9
	Blue (RAL 5024)	C5
	Green (RAL 6017)	C17
	Grey (RAL 7035)	C3
	Orange (RAL 2004)	C2
	Red (RAL 3000)	C6
	Yellow (RAL 1021)	C4

MBR+CGS

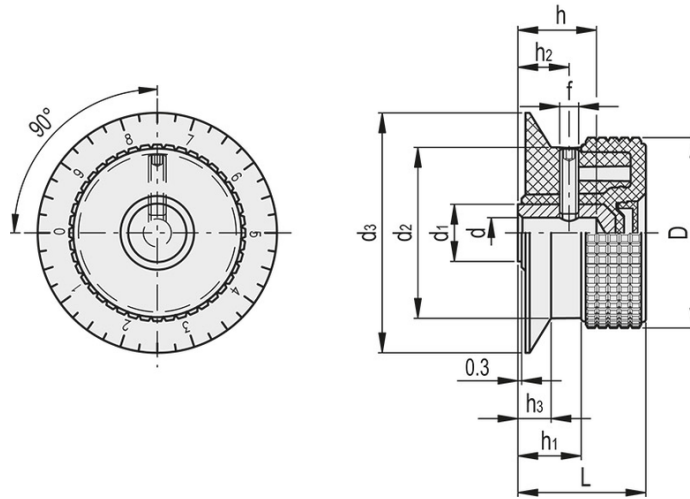
Code	Description	D	d _{H9}	L	d ₁	d ₂	h	h ₁	h ₂	f	Weight
34813-C17	MBR.30 B-5+CGS-C17	30	5	24	11	26	12	10.5	8.5	M4	32
34813-C2	MBR.30 B-5+CGS-C2	30	5	24	11	26	12	10.5	8.5	M4	32
34813-C3	MBR.30 B-5+CGS-C3	30	5	24	11	26	12	10.5	8.5	M4	32
34813-C4	MBR.30 B-5+CGS-C4	30	5	24	11	26	12	10.5	8.5	M4	32
34813-C5	MBR.30 B-5+CGS-C5	30	5	24	11	26	12	10.5	8.5	M4	32
34813-C6	MBR.30 B-5+CGS-C6	30	5	24	11	26	12	10.5	8.5	M4	32
34813-C9	MBR.30 B-5+CGS-C9	30	5	24	11	26	12	10.5	8.5	M4	32
34823-C17	MBR.30 B-6+CGS-C17	30	6	24	12	26	14	10.5	8.5	M4	30
34823-C2	MBR.30 B-6+CGS-C2	30	6	24	12	26	14	10.5	8.5	M4	30
34823-C3	MBR.30 B-6+CGS-C3	30	6	24	12	26	14	10.5	8.5	M4	30
34823-C4	MBR.30 B-6+CGS-C4	30	6	24	12	26	14	10.5	8.5	M4	30
34823-C5	MBR.30 B-6+CGS-C5	30	6	24	12	26	14	10.5	8.5	M4	30
34823-C6	MBR.30 B-6+CGS-C6	30	6	24	12	26	14	10.5	8.5	M4	30
34823-C9	MBR.30 B-6+CGS-C9	30	6	24	12	26	14	10.5	8.5	M4	30
34833-C17	MBR.40 B-6+CGS-C17	40	6	26	12	34.5	14	12	9	M4	35
34833-C2	MBR.40 B-6+CGS-C2	40	6	26	12	34.5	14	12	9	M4	35
34833-C3	MBR.40 B-6+CGS-C3	40	6	26	12	34.5	14	12	9	M4	35
34833-C4	MBR.40 B-6+CGS-C4	40	6	26	12	34.5	14	12	9	M4	35
34833-C5	MBR.40 B-6+CGS-C5	40	6	26	12	34.5	14	12	9	M4	35
34833-C6	MBR.40 B-6+CGS-C6	40	6	26	12	34.5	14	12	9	M4	35
34833-C9	MBR.40 B-6+CGS-C9	40	6	26	12	34.5	14	12	9	M4	35
34853-C17	MBR.50 B-8+CGS-C17	50	8	33	15	45	20	15	11.5	M5	60
34853-C2	MBR.50 B-8+CGS-C2	50	8	33	15	45	20	15	11.5	M5	60
34853-C3	MBR.50 B-8+CGS-C3	50	8	33	15	45	20	15	11.5	M5	60
34853-C4	MBR.50 B-8+CGS-C4	50	8	33	15	45	20	15	11.5	M5	60
34853-C5	MBR.50 B-8+CGS-C5	50	8	33	15	45	20	15	11.5	M5	60
34853-C6	MBR.50 B-8+CGS-C6	50	8	33	15	45	20	15	11.5	M5	60
34853-C9	MBR.50 B-8+CGS-C9	50	8	33	15	45	20	15	11.5	M5	60










	Black (RAL 9005)	C9
	Blue (RAL 5024)	C5
	Green (RAL 6017)	C17
	Grey (RAL 7035)	C3
	Orange (RAL 2004)	C2
	Red (RAL 3000)	C6
	Yellow (RAL 1021)	C4

MBR+FK

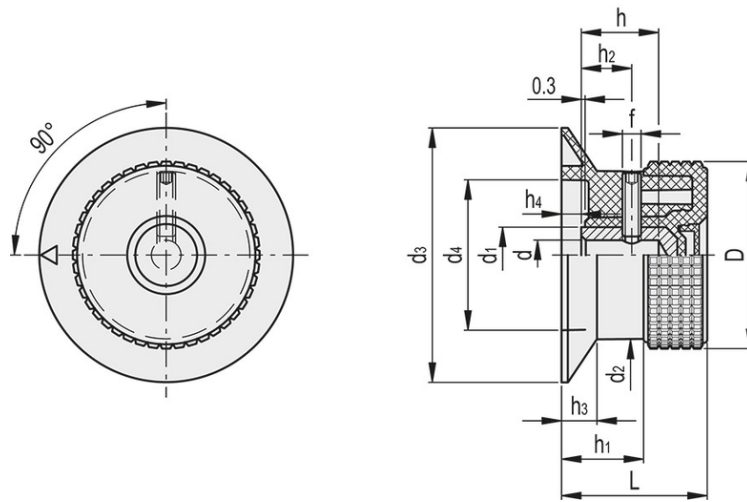
Code	Description	D	d _{H9}	L	d ₁	d ₂	d ₃	h	h ₁	h ₂	h ₃	f	Weight
34814-C17	MBR.30 B-5+FK-C17	30	5	24	11	26	42	12	10.5	8.5	5	M4	27
34814-C2	MBR.30 B-5+FK-C2	30	5	24	11	26	42	12	10.5	8.5	5	M4	27
34814-C3	MBR.30 B-5+FK-C3	30	5	24	11	26	42	12	10.5	8.5	5	M4	27
34814-C4	MBR.30 B-5+FK-C4	30	5	24	11	26	42	12	10.5	8.5	5	M4	27
34814-C5	MBR.30 B-5+FK-C5	30	5	24	11	26	42	12	10.5	8.5	5	M4	27
34814-C6	MBR.30 B-5+FK-C6	30	5	24	11	26	42	12	10.5	8.5	5	M4	27
34814-C9	MBR.30 B-5+FK-C9	30	5	24	11	26	42	12	10.5	8.5	5	M4	27
34824-C17	MBR.30 B-6+FK-C17	30	6	24	12	26	42	14	10.5	8.5	5	M4	25
34824-C2	MBR.30 B-6+FK-C2	30	6	24	12	26	42	14	10.5	8.5	5	M4	25
34824-C3	MBR.30 B-6+FK-C3	30	6	24	12	26	42	14	10.5	8.5	5	M4	25
34824-C4	MBR.30 B-6+FK-C4	30	6	24	12	26	42	14	10.5	8.5	5	M4	25
34824-C5	MBR.30 B-6+FK-C5	30	6	24	12	26	42	14	10.5	8.5	5	M4	25
34824-C6	MBR.30 B-6+FK-C6	30	6	24	12	26	42	14	10.5	8.5	5	M4	25
34824-C9	MBR.30 B-6+FK-C9	30	6	24	12	26	42	14	10.5	8.5	5	M4	25
34834-C17	MBR.40 B-6+FK-C17	40	6	26	12	34.5	50	14	12	9	5.5	M4	38
34834-C2	MBR.40 B-6+FK-C2	40	6	26	12	34.5	50	14	12	9	5.5	M4	38
34834-C3	MBR.40 B-6+FK-C3	40	6	26	12	34.5	50	14	12	9	5.5	M4	38
34834-C4	MBR.40 B-6+FK-C4	40	6	26	12	34.5	50	14	12	9	5.5	M4	38
34834-C5	MBR.40 B-6+FK-C5	40	6	26	12	34.5	50	14	12	9	5.5	M4	38
34834-C6	MBR.40 B-6+FK-C6	40	6	26	12	34.5	50	14	12	9	5.5	M4	38
34834-C9	MBR.40 B-6+FK-C9	40	6	26	12	34.5	50	14	12	9	5.5	M4	38
34854-C17	MBR.50 B-8+FK-C17	50	8	33	15	45	63	20	15	11.5	6.5	M5	65
34854-C2	MBR.50 B-8+FK-C2	50	8	33	15	45	63	20	15	11.5	6.5	M5	65
34854-C3	MBR.50 B-8+FK-C3	50	8	33	15	45	63	20	15	11.5	6.5	M5	65
34854-C4	MBR.50 B-8+FK-C4	50	8	33	15	45	63	20	15	11.5	6.5	M5	65
34854-C5	MBR.50 B-8+FK-C5	50	8	33	15	45	63	20	15	11.5	6.5	M5	65
34854-C6	MBR.50 B-8+FK-C6	50	8	33	15	45	63	20	15	11.5	6.5	M5	65
34854-C9	MBR.50 B-8+FK-C9	50	8	33	15	45	63	20	15	11.5	6.5	M5	65










	Black (RAL 9005)	C9
	Blue (RAL 5024)	C5
	Green (RAL 6017)	C17
	Grey (RAL 7035)	C3
	Orange (RAL 2004)	C2
	Red (RAL 3000)	C6
	Yellow (RAL 1021)	C4

MBR+FGS

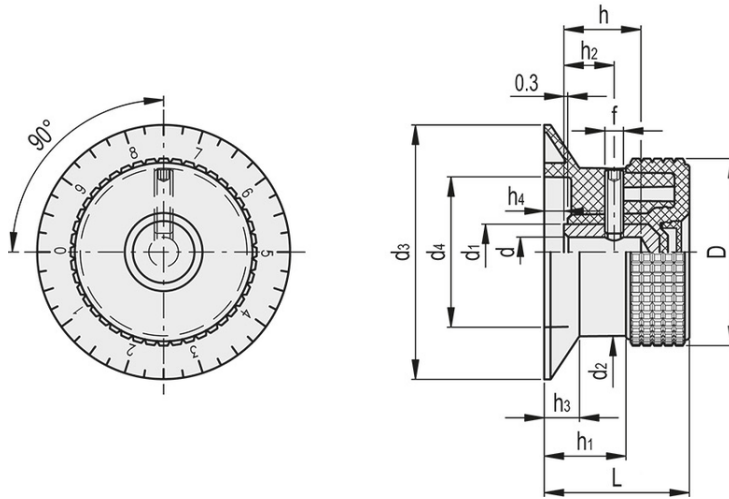
Code	Description	D	d _{H9}	L	d ₁	d ₂	d ₃	h	h ₁	h ₂	h ₃	f	Weight
34815-C17	MBR.30 B-5+FGS-C17	30	5	24	11	26	42	12	10.5	8.5	5	M4	27
34815-C2	MBR.30 B-5+FGS-C2	30	5	24	11	26	42	12	10.5	8.5	5	M4	27
34815-C3	MBR.30 B-5+FGS-C3	30	5	24	11	26	42	12	10.5	8.5	5	M4	27
34815-C4	MBR.30 B-5+FGS-C4	30	5	24	11	26	42	12	10.5	8.5	5	M4	27
34815-C5	MBR.30 B-5+FGS-C5	30	5	24	11	26	42	12	10.5	8.5	5	M4	27
34815-C6	MBR.30 B-5+FGS-C6	30	5	24	11	26	42	12	10.5	8.5	5	M4	27
34815-C9	MBR.30 B-5+FGS-C9	30	5	24	11	26	42	12	10.5	8.5	5	M4	27
34825-C17	MBR.30 B-6+FGS-C17	30	6	24	12	26	42	14	10.5	8.5	5	M4	25
34825-C2	MBR.30 B-6+FGS-C2	30	6	24	12	26	42	14	10.5	8.5	5	M4	25
34825-C3	MBR.30 B-6+FGS-C3	30	6	24	12	26	42	14	10.5	8.5	5	M4	25
34825-C4	MBR.30 B-6+FGS-C4	30	6	24	12	26	42	14	10.5	8.5	5	M4	25
34825-C5	MBR.30 B-6+FGS-C5	30	6	24	12	26	42	14	10.5	8.5	5	M4	25
34825-C6	MBR.30 B-6+FGS-C6	30	6	24	12	26	42	14	10.5	8.5	5	M4	25
34825-C9	MBR.30 B-6+FGS-C9	30	6	24	12	26	42	14	10.5	8.5	5	M4	25
34835-C17	MBR.40 B-6+FGS-C17	40	6	26	12	34.5	50	14	12	9	5.5	M4	38
34835-C2	MBR.40 B-6+FGS-C2	40	6	26	12	34.5	50	14	12	9	5.5	M4	38
34835-C3	MBR.40 B-6+FGS-C3	40	6	26	12	34.5	50	14	12	9	5.5	M4	38
34835-C4	MBR.40 B-6+FGS-C4	40	6	26	12	34.5	50	14	12	9	5.5	M4	38
34835-C5	MBR.40 B-6+FGS-C5	40	6	26	12	34.5	50	14	12	9	5.5	M4	38
34835-C6	MBR.40 B-6+FGS-C6	40	6	26	12	34.5	50	14	12	9	5.5	M4	38
34835-C9	MBR.40 B-6+FGS-C9	40	6	26	12	34.5	50	14	12	9	5.5	M4	38
34855-C17	MBR.50 B-8+FGS-C17	50	8	33	15	45	63	20	15	11.5	6.5	M5	65
34855-C2	MBR.50 B-8+FGS-C2	50	8	33	15	45	63	20	15	11.5	6.5	M5	65
34855-C3	MBR.50 B-8+FGS-C3	50	8	33	15	45	63	20	15	11.5	6.5	M5	65
34855-C4	MBR.50 B-8+FGS-C4	50	8	33	15	45	63	20	15	11.5	6.5	M5	65
34855-C5	MBR.50 B-8+FGS-C5	50	8	33	15	45	63	20	15	11.5	6.5	M5	65
34855-C6	MBR.50 B-8+FGS-C6	50	8	33	15	45	63	20	15	11.5	6.5	M5	65
34855-C9	MBR.50 B-8+FGS-C9	50	8	33	15	45	63	20	15	11.5	6.5	M5	65










	Black (RAL 9005)	C9
	Blue (RAL 5024)	C5
	Green (RAL 6017)	C17
	Grey (RAL 7035)	C3
	Orange (RAL 2004)	C2
	Red (RAL 3000)	C6
	Yellow (RAL 1021)	C4

MBR+FKP

Code	Description	D	d _{H9}	L	d ₁	d ₂	d ₃	d ₄	h	h ₁	h ₂	h ₃	h ₄	f	Weight
34816-C17	MBR.30 B-5+FKP-C17	30	5	29	11	26	42	22	12	16	8.5	7	5	M4	31
34816-C2	MBR.30 B-5+FKP-C2	30	5	29	11	26	42	22	12	16	8.5	7	5	M4	31
34816-C3	MBR.30 B-5+FKP-C3	30	5	29	11	26	42	22	12	16	8.5	7	5	M4	31
34816-C4	MBR.30 B-5+FKP-C4	30	5	29	11	26	42	22	12	16	8.5	7	5	M4	31
34816-C5	MBR.30 B-5+FKP-C5	30	5	29	11	26	42	22	12	16	8.5	7	5	M4	31
34816-C6	MBR.30 B-5+FKP-C6	30	5	29	11	26	42	22	12	16	8.5	7	5	M4	31
34816-C9	MBR.30 B-5+FKP-C9	30	5	29	11	26	42	22	12	16	8.5	7	5	M4	31
34826-C17	MBR.30 B-6+FKP-C17	30	6	29	12	26	42	22	14	16	8.5	7	5	M4	29
34826-C2	MBR.30 B-6+FKP-C2	30	6	29	12	26	42	22	14	16	8.5	7	5	M4	29
34826-C3	MBR.30 B-6+FKP-C3	30	6	29	12	26	42	22	14	16	8.5	7	5	M4	29
34826-C4	MBR.30 B-6+FKP-C4	30	6	29	12	26	42	22	14	16	8.5	7	5	M4	29
34826-C5	MBR.30 B-6+FKP-C5	30	6	29	12	26	42	22	14	16	8.5	7	5	M4	29
34826-C6	MBR.30 B-6+FKP-C6	30	6	29	12	26	42	22	14	16	8.5	7	5	M4	29
34826-C9	MBR.30 B-6+FKP-C9	30	6	29	12	26	42	22	14	16	8.5	7	5	M4	29
34836-C17	MBR.40 B-6+FKP-C17	40	6	32.5	12	34.5	50	31	14	18.5	9	8	6	M4	42
34836-C2	MBR.40 B-6+FKP-C2	40	6	32.5	12	34.5	50	31	14	18.5	9	8	6	M4	42
34836-C3	MBR.40 B-6+FKP-C3	40	6	32.5	12	34.5	50	31	14	18.5	9	8	6	M4	42
34836-C4	MBR.40 B-6+FKP-C4	40	6	32.5	12	34.5	50	31	14	18.5	9	8	6	M4	42
34836-C5	MBR.40 B-6+FKP-C5	40	6	32.5	12	34.5	50	31	14	18.5	9	8	6	M4	42
34836-C6	MBR.40 B-6+FKP-C6	40	6	32.5	12	34.5	50	31	14	18.5	9	8	6	M4	42
34836-C9	MBR.40 B-6+FKP-C9	40	6	32.5	12	34.5	50	31	14	18.5	9	8	6	M4	42
34856-C17	MBR.50 B-8+FKP-C17	50	8	39	15	45	63	40	20	22	11.5	9.5	6	M5	67
34856-C2	MBR.50 B-8+FKP-C2	50	8	39	15	45	63	40	20	22	11.5	9.5	6	M5	67
34856-C3	MBR.50 B-8+FKP-C3	50	8	39	15	45	63	40	20	22	11.5	9.5	6	M5	67
34856-C4	MBR.50 B-8+FKP-C4	50	8	39	15	45	63	40	20	22	11.5	9.5	6	M5	67
34856-C5	MBR.50 B-8+FKP-C5	50	8	39	15	45	63	40	20	22	11.5	9.5	6	M5	67
34856-C6	MBR.50 B-8+FKP-C6	50	8	39	15	45	63	40	20	22	11.5	9.5	6	M5	67
34856-C9	MBR.50 B-8+FKP-C9	50	8	39	15	45	63	40	20	22	11.5	9.5	6	M5	67



	Black (RAL 9005)	C9
	Blue (RAL 5024)	C5
	Green (RAL 6017)	C17
	Grey (RAL 7035)	C3
	Orange (RAL 2004)	C2
	Red (RAL 3000)	C6
	Yellow (RAL 1021)	C4

MBR+FGSP

Code	Description	D	d _{H9}	L	d ₁	d ₂	d ₃	d ₄	h	h ₁	h ₂	h ₃	h ₄	f	Weight
34817-C17	MBR.30 B-5+FGSP-C17	30	5	29	11	26	42	22	12	16	8.5	7	5	M4	31
34817-C2	MBR.30 B-5+FGSP-C2	30	5	29	11	26	42	22	12	16	8.5	7	5	M4	31
34817-C3	MBR.30 B-5+FGSP-C3	30	5	29	11	26	42	22	12	16	8.5	7	5	M4	31
34817-C4	MBR.30 B-5+FGSP-C4	30	5	29	11	26	42	22	12	16	8.5	7	5	M4	31
34817-C5	MBR.30 B-5+FGSP-C5	30	5	29	11	26	42	22	12	16	8.5	7	5	M4	31
34817-C6	MBR.30 B-5+FGSP-C6	30	5	29	11	26	42	22	12	16	8.5	7	5	M4	31
34817-C9	MBR.30 B-5+FGSP-C9	30	5	29	11	26	42	22	12	16	8.5	7	5	M4	31
34827-C17	MBR.30 B-6+FGSP-C17	30	6	29	12	26	42	22	14	16	8.5	7	5	M4	29
34827-C2	MBR.30 B-6+FGSP-C2	30	6	29	12	26	42	22	14	16	8.5	7	5	M4	29
34827-C3	MBR.30 B-6+FGSP-C3	30	6	29	12	26	42	22	14	16	8.5	7	5	M4	29
34827-C4	MBR.30 B-6+FGSP-C4	30	6	29	12	26	42	22	14	16	8.5	7	5	M4	29
34827-C5	MBR.30 B-6+FGSP-C5	30	6	29	12	26	42	22	14	16	8.5	7	5	M4	29
34827-C6	MBR.30 B-6+FGSP-C6	30	6	29	12	26	42	22	14	16	8.5	7	5	M4	29
34827-C9	MBR.30 B-6+FGSP-C9	30	6	29	12	26	42	22	14	16	8.5	7	5	M4	29
34837-C17	MBR.40 B-6+FGSP-C17	40	6	32.5	12	34.5	50	31	14	18.5	9	8	6	M4	42
34837-C2	MBR.40 B-6+FGSP-C2	40	6	32.5	12	34.5	50	31	14	18.5	9	8	6	M4	42
34837-C3	MBR.40 B-6+FGSP-C3	40	6	32.5	12	34.5	50	31	14	18.5	9	8	6	M4	42
34837-C4	MBR.40 B-6+FGSP-C4	40	6	32.5	12	34.5	50	31	14	18.5	9	8	6	M4	42
34837-C5	MBR.40 B-6+FGSP-C5	40	6	32.5	12	34.5	50	31	14	18.5	9	8	6	M4	42
34837-C6	MBR.40 B-6+FGSP-C6	40	6	32.5	12	34.5	50	31	14	18.5	9	8	6	M4	42
34837-C9	MBR.40 B-6+FGSP-C9	40	6	32.5	12	34.5	50	31	14	18.5	9	8	6	M4	42
34857-C17	MBR.50 B-8+FGSP-C17	50	8	39	15	45	63	40	20	22	11.5	9.5	6	M5	67
34857-C2	MBR.50 B-8+FGSP-C2	50	8	39	15	45	63	40	20	22	11.5	9.5	6	M5	67
34857-C3	MBR.50 B-8+FGSP-C3	50	8	39	15	45	63	40	20	22	11.5	9.5	6	M5	67
34857-C4	MBR.50 B-8+FGSP-C4	50	8	39	15	45	63	40	20	22	11.5	9.5	6	M5	67
34857-C5	MBR.50 B-8+FGSP-C5	50	8	39	15	45	63	40	20	22	11.5	9.5	6	M5	67
34857-C6	MBR.50 B-8+FGSP-C6	50	8	39	15	45	63	40	20	22	11.5	9.5	6	M5	67
34857-C9	MBR.50 B-8+FGSP-C9	50	8	39	15	45	63	40	20	22	11.5	9.5	6	M5	67